

E9

MAGNUM SHEAR™

Cut where you work, Work where you cut.

INSTRUCTION MANUAL

IMPORTANT!
READ THIS
BEFORE USE



BULLET TOOLS™
The Professional's Best Shot™



Made in the USA by Gunntech Mfg., Inc.
www.bullettools.com • USA (800) 406-8998 • Int'l (208) 772-0175



WARNING: FAILURE TO FOLLOW THESE RULES MAY RESULT IN SERIOUS INJURY! USING THIS MACHINE WITH RESPECT AND CAUTION WILL CONSIDERABLY LESSEN THE POSSIBILITY OF PERSONAL INJURY.

SAFETY RULES FOR THE MAGNUM SHEAR™

1.**READ AND UNDERSTAND THIS INSTRUCTION MANUAL BEFORE OPERATING THE MAGNUM SHEAR™.**
2.If you are not thoroughly familiar with the operation of the Magnum Shear™, obtain advice from a qualified instructor or call 800-406-8998 (International: 208-772-0175).
3.Stay alert. Do not operate while under the influence of drugs, alcohol, or medication.
4.Always wear safety approved eye protection with side shields (ANSI Z87.1).
5.Keep work area clean and free of debris.
6.Keep children and unauthorized persons away from Magnum Shear™ and work area.
7.Make sure tool is secure. Operate only on a firm substrate or solid stand.
8.Use the right tool. Do not force the Magnum Shear™ or use it for a job for which it was not designed; use only on approved materials (see list on p. 7).
9.Keep Blade sharp. A dull Blade will not perform properly.
10.Always keep hands away from Blade while operating or carrying.
11.Do not alter or misuse this tool. The Magnum Shear™ is precision built; modifications not specified in this manual may result in a dangerous condition.
12.Maintain Magnum Shear™ with care. Keep Blade sharp and clean. Follow instructions for lubricating and changing accessories.
13.Use only recommended accessories. The use of improper accessories may cause hazards or injury.
14.Never leave the Magnum Shear™ unattended. Secure the Handle with the Lock Pin when not in use (see p.2, #3).
15.Warning: The dust generated by cutting certain wood, wood fiber and/or PVC products can be injurious to your health (*but since the Magnum Shear™ doesn't create any dust, we suggest that you don't eat the small chips sometimes created when cutting*).



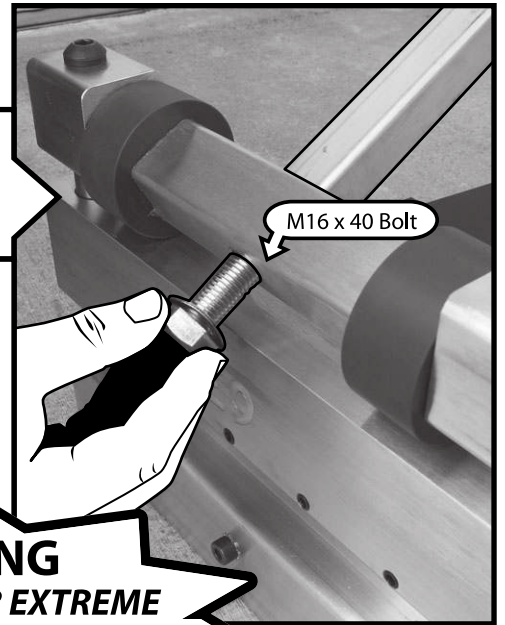
SET-UP & ASSEMBLY

1 ATTACHING THE HANDLE

Remove M16 x 40 Bolt from end of Handle and insert Handle into Cam Shaft

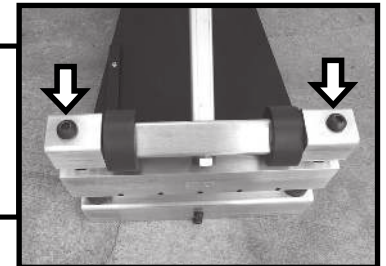


Insert M16 x 40 Bolt into Cam Shaft and tighten (24mm or 15/16" wrench recommended)



WARNING
HANDLE UNDER EXTREME PRESSURE - DO NOT ALLOW TO SLAM BACK!

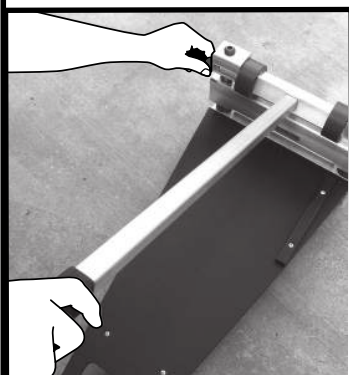
2 DO NOT LOOSEN, REMOVE OR ADJUST THE LENGTH of the M12 x 35 BH Retainer Screws - dealer repair only. Any adjustments to these bolt settings will VOID MANUFACTURER'S WARRANTY.



3 SAFETY LOCK

A To UNLOCK Handle

While holding the Handle down, pull the Safety Lock Pin out (this allows free movement of Handle).



B To LOCK Handle

While holding the Handle down, push Safety Lock Pin in completely. (Note: you may have to lift Handle slightly to insert Safety Lock Pin).



WARNING
HANDLE UNDER EXTREME PRESSURE - DO NOT ALLOW TO SLAM BACK!

USING YOUR MAGNUM SHEAR™



1 MAKING CUTS

Your **Magnum Shear™** is equipped with a **Handle** that is **grasped by the operator and pushed down**.

WARNING
HANDLE UNDER EXTREME PRESSURE - DO NOT ALLOW TO SLAM BACK!

2

It is recommended that you **hold the material down and in place until the cut is complete**.
ALWAYS KEEP HANDS AWAY FROM BLADE WHILE OPERATING OR CARRYING.



3

MAINTAIN CONTROL OF HANDLE!
DO NOT ALLOW HANDLE TO SLAM BACK AFTER MAKING A CUT.

WARNING
It is advised that protective gloves and goggles are worn when operating the Magnum Shear™

4



You should **spray a fine layer of light oil** (10W motor oil or WD-40®) over the **Power Assembly** once every month to prevent surface corrosion.

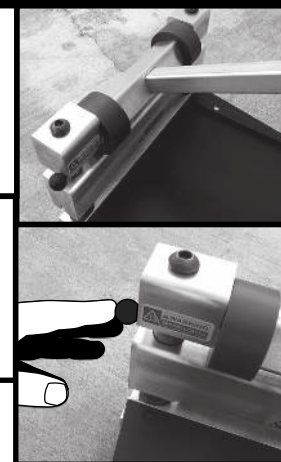
5

It is important to **secure the Handle** in the down (front) position with the **Safety Lock Pin engaged** while carrying, storing or transporting this machine (see p.2, #3).

6 THE BLADE

The **Blade** must be placed in the **Head** with the **flat side toward the table**.

• **A burr will form** on the flat side of the **Blade** after the first few cuts; **this is normal**. Use the **Hone Stone** (included) to remove burr (see p.5, #9).



NOTICE: It is not necessary to remove the small nicks or chips from the **Blade edge** when sharpening or honing

(flat side)

flat side toward table



WARNING
VERY SHARP BLADE

USING YOUR MAGNUM SHEAR™

7 CHANGING THE BLADE

WARNING! BLADE IS EXTREMELY SHARP!
Use hand protection when removing, sharpening, or honing blade



A • If your machine came equipped with a Blade Guard, remove Blade Guard by loosening the 4 outward screws. Set Blade Guard aside.

B **TURN THE MAGNUM SHEAR™ UPSIDE DOWN**

Tip: Set the Magnum Shear™ on the edge of a sturdy bench or table



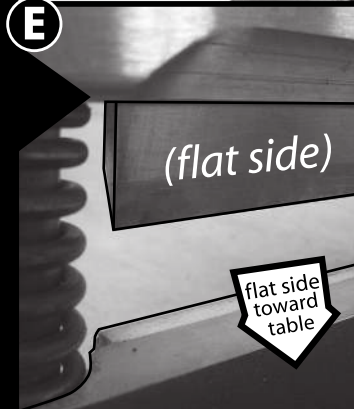
B-C **C** • Using the 4mm Hex Wrench (included), **LOOSEN BUT DO NOT REMOVE** the M8 Set Screws. This will loosen the Blade.

D • **TO REMOVE BLADE:** hold Blade by each end and lift out of Blade Slot.



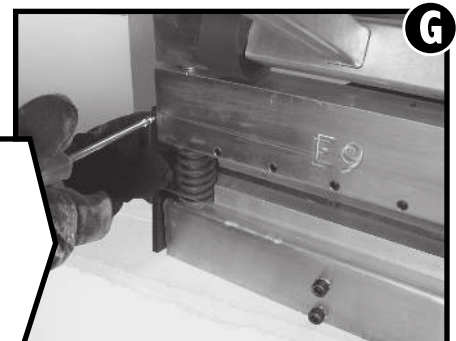
E • **TO INSTALL THE BLADE:** hold Blade by each end and place into the Blade Slot in the Head. *Be sure it is firmly seated and there is no debris in the Blade Slot.*

NOTICE: THE BLADE MUST BE PLACED IN THE HEAD WITH THE FLAT SIDE TOWARD THE TABLE



F • Using the 4mm Hex Wrench, tighten the M8 Set Screws, starting with the center Screw.

G • If your machine came equipped with a Blade Guard, turn machine right side up, and replace Blade Guard. Re-attach with "Lift Hole" toward table and tighten screws.



USING YOUR MAGNUM SHEAR™

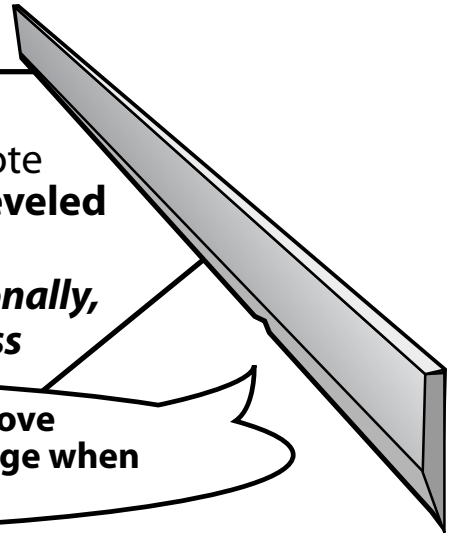


8 SHARPENING THE BLADE

The Blade can be sharpened to restore a one-sided, 18-19 degree knife-edge. It is important to note that the Blade must be sharpened only on the beveled side, leaving the flat side flat.

- We recommend power grinding be done professionally, as the blade must be fluid cooled during this process

NOTICE: It is not necessary to remove the small nicks or chips from the Blade edge when sharpening or honing



9 HONING THE BLADE "Breaking the Chip"

With the Blade in the machine, it is quick and easy to remove the burr using the Hone Stone (included)

There are three situations when it is important to remove the burr (or "break the chip") on the flat side of the Blade:

1. After the first 5-10 cuts on a new Blade.

2. Every 30-50 cuts on the job.

3. When the Blade has been re-sharpened.

To Hone

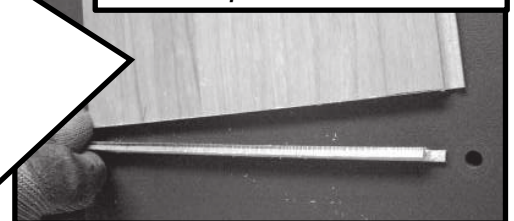
Pull the Magnum Shear™ Handle down until the Blade is just above the Blade Stop. Lay the wide flat side of the Hone Stone against the flat side of the Blade and move the Hone Stone from end to end 2 to 3 times.

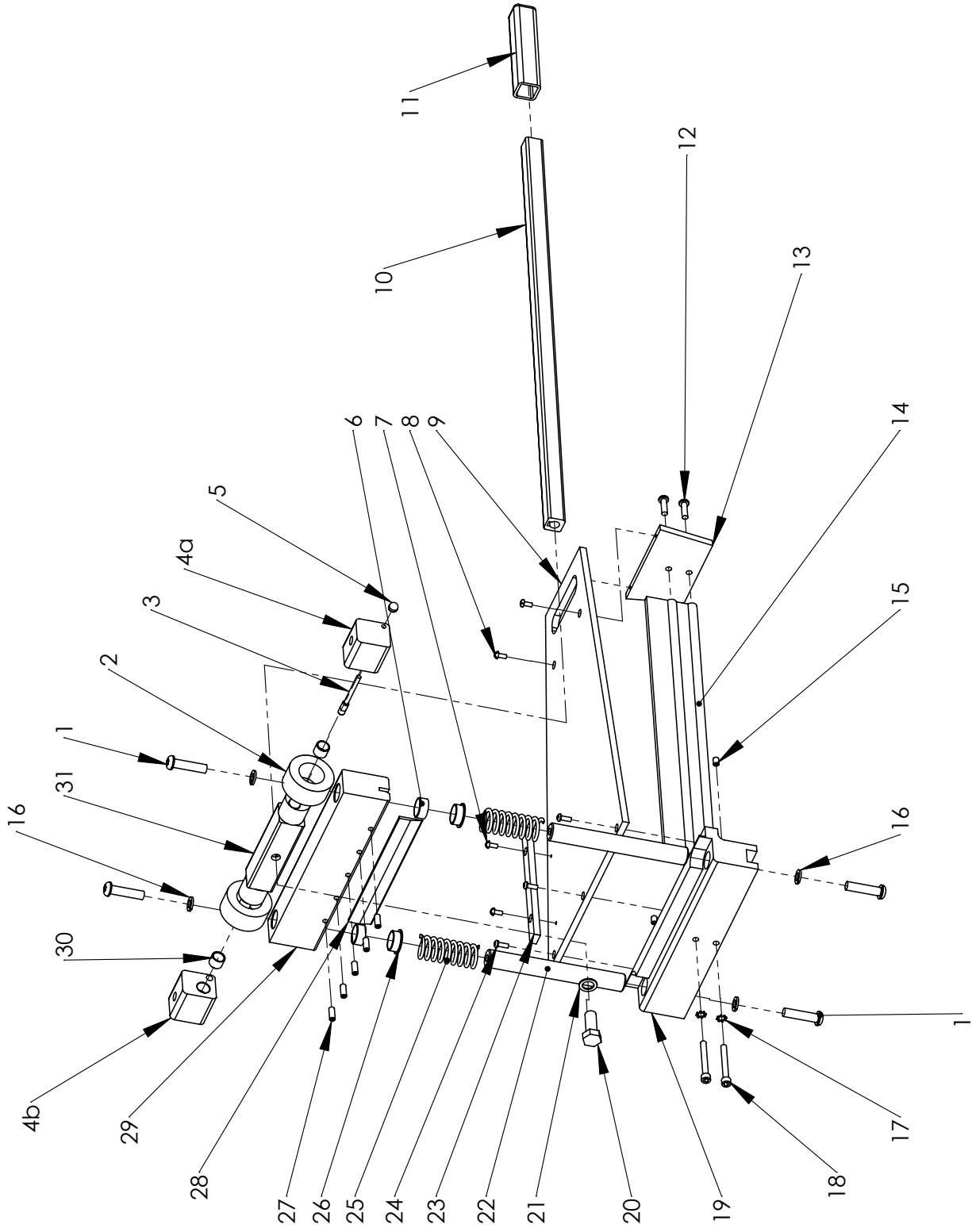


10 Double Cutting

Simply make your first cut 1/8" to 1/4" (3 to 6mm) longer than your mark, then go back and make your second cut on your mark. This is very useful when a trim molding or transition cannot be used to cover your cut end.

Most products (listed on p. 8) shear very well with just one cut. Some brands of laminate flooring may require cutting twice to produce a better cut.





E9 MAGNUM SHEAR™
part breakdown

E9 MAGNUM SHEAR™ part list

REF. NUMBER	PART NUMBER	DESCRIPTION
1.	887A	Top Bolt Shaft
2.	865-E9	Bearings, Plastic - E9 Spec
3.	837P	Pin - Lock Down
4A, 4B	853-09A	Retainer E9
5.	837P-BN	Ball Knob - Pin Lock 3/4 - 1/4 - 20
6.	876	Head Bearing 1 Sleeve
7.	877	5/8 #12 Panhead Phillips/Machine Screw
8.	708-07	Screw #12 x 1in. Pan Head Phillips TS
9.	822-09E	Table
10.	858-09E	Handle E9
11.	868	Handle Rubber Grip
12.	825	Screw M8 x 30 BHSCS
13.	821-E9	Tail
14.	845	Rail
15.	886	Set Screw M8 x 10 x 1.25 CupPoint
16.	893	Washer Split Lock Shaft M12 Plain
17.	824	Washer M8 EXT. STAR
18.	823	Screw M8 x 65 SHCS
19.	851-09E	Base E9
20.	887A-07	M16 x 40 Hex Cap Screw
21.	887WW	Wave Washer - M16 Plain
22.	862-09E	Pin E9 1018 CR +1/16 -0
23.	856-09EM	Fence
24.	882	Bolt Table M6 x 16 x 1.0 BHSC
25.	859	Spring - Part # 72777
26.	875	Head Bearing 1 Flange
27.	884	Set Screw M8 x 20 Flat Point
28.	690B	Shear Blade
29.	852-09E	Head E9
30.	874-09E	Retainer Bearings 5/8 x 5/8 iglide
31.	869-09EM	Cam Assembly
Not Shown	844	Hex Wrench 4mm
Not Shown	701S	Hone Stone
Not Shown	835-E9	Instruction Manual

CUT LIST:

ACCEPTABLE MATERIALS & SIZE LIMITATIONS

Material	Max. Thickness
Carpet Tile	18mm or 3/4inch
Commercial Vinyl	24mm or 1 inch
Cork	24mm or 1 inch
Durastone	6mm or 1/4 inch
HardiBoard Siding	12mm or 1/2 inch
Laminate Flooring	15mm or 5/8 inch
Leather	24mm or 1 inch
Luxury Vinyl Tile	24mm or 1 inch
Parquet	12mm or 1/2 inch
Permastone	6mm or 1/4 inch
PVC Tile	24mm or 1 inch
Recycled Tire Tile	24mm or 1 inch
Rubber Cove Base	12mm or 1/2 inch
Rubber Tile	24mm or 1 inch
Soft Plastic	24mm or 1 inch
Tirex, Rope Cord	24mm or 1 inch
VCT Tile	18mm or 3/4inch
Vinyl Siding	24mm or 1 inch
Wood Siding	24mm or 1 inch

Available Accessories:

Replacement Blades
Item # 690B

Hone Stone
Item # 701S



IAP Certified: Magnum Shear™ A-0000096

Installation Assurance Program: The IAP is the only Industry program designed to provide the Customer with assurance that when a professional Installer is combined with a product that performs, a total purchase value is received.



Bullet Tools™ will repair or replace, at its expense and at its option, any Bullet Tools™ product, product part, or product accessory which in normal use has proven to be defective in workmanship or material, provided that the customer returns the product prepaid to Bullet Tools™ manufacturing facility with proof of purchase of the product within one year and provides Bullet Tools™ with reasonable opportunity to verify the alleged defect by inspection. Bullet Tools™ will not be responsible for any asserted defect which has resulted from normal wear, misuse, abuse or repair or alteration made or specifically authorized by anyone other than the authorized Bullet Tools™ manufacturer or representative. Under no circumstances will Bullet Tools™ be liable for incidental or consequential damages resulting from defective products. This warranty is Bullet Tools™ sole warranty and sets forth the customer's exclusive remedy, with respect to defective products; all other warranties, express or implied, whether of merchantability fitness for purpose, or otherwise, are expressly disclaimed by Bullet Tools™.

#835-E9 Instruction Manual *Revised August 2008*



BULLET TOOLS™
The Professional's Best Shot™



Made in the USA by Gunntech Mfg., Inc.

www.bullettools.com • USA (800) 406-8998 • Int'l (208) 772-0175
3390 W. Hayden Ave., Hayden, ID 83835